



DATAIR - 400/M3 ARINC-429 TESTER Label Definition Software, User Manual

Label table

Side:

| Label | Eq Id (hex) | Type | Param name | Units | Starting bit in msg | Resol in BCD char | Most sig bit resol | Decimal point pos | Number of bits in msg | Scale | Msg Ind.. |
|-------|-------------|------|------------|--------|---------------------|-------------------|--------------------|-------------------|-----------------------|-------|-----------|
| 100 | 001 | BNR | TEST | Deg/18 | 0x1D | | | | 12 | 181 | 0 |
| 106 | 001 | BNR | DEC4 | Deg/18 | 0x1D | | | 10 | 2 | 11 | |
| 102 | 001 | BNR | DEC5 | Deg/18 | 0x1D | | | 10 | 2 | 12 | |
| 106 | 001 | BNR | DEC6 | Deg/18 | 0x1D | | | 10 | 2 | 13 | |

Storage in use Custom message (0x40)

BCD BNR

Label: Eq ID: Param name: Unit: Start bit in msg: Number of bits in msg: Scale:

YED Avionics Limited

Park House
10, Park Street
Bristol
Avon, BS1 5HX
UK

Tel: +44 (0)117 907 4761
e-mail: support@yed.com
Web: www.yed.com

Disclaimer

All information, including illustrations, is believed to be reliable. Users, however, should independently evaluate the suitability of the product for their particular application. YED Avionics Limited (YED) make no warranties as to the accuracy or completeness of the information, and disclaims any liability regarding its use. YED's only obligations are those contained in the Standard Terms and Conditions of Sale for this product and in no case will YED be liable for any incidental, indirect or consequential damages arising from the sale, resale, use or misuse of the product.

Furthermore, it shall be understood by the user that the product supplied is intended for use as first line Diagnostic Test Equipment and shall under no circumstances be used to certify or calibrate flight or mission critical equipment.

This document is proprietary to YED and is not to be reproduced or otherwise disseminated without the written consent of YED.

*YED Avionics Limited
Park House
10, Park Street
Bristol
Avon, BS1 5HX
U.K.*

Table of Contents

| | | |
|-----------|---|----------|
| 1. | INTRODUCTION..... | 5 |
| 1.1 | SOFTWARE FEATURES..... | 5 |
| 2. | RUNNING THE SOFTWARE | 6 |
| 2.1 | LABEL TABLE | 7 |
| 2.2 | REQUESTING FULL LICENSED SOFTWARE VERSION | 8 |

1. INTRODUCTION

DATAIR-400M3 Label Definition Serial Communication software is a tool for defining custom Labels on your PC for use on your DATAIR-400/M3. Although it is possible to define custom labels on the DATAIR-400/M3 directly, some customers prefer to do this on a PC and then download these definitions to their DATAIR-400/M3. It is also possible to download and back up any custom defined Labels created on the DATAIR-400/M3 to your PC.

This user guide describes features and usage of the software.

DATAIR-400M3 Serial Communication software is compatible with Windows XP and higher, x86 and x64, with .NET framework 4.5. No installation is needed, just run it.

1.1 Software features

DATAIR-400M3 Serial Communication software features include:

- Adding/Updating/Deleting custom label storage
- BNR/BCD and Rx/Tx modifications
- Import/Export configuration to XML file
- Offline mode for working on local configuration without DATAIR-400M3 connection

2. RUNNING THE SOFTWARE

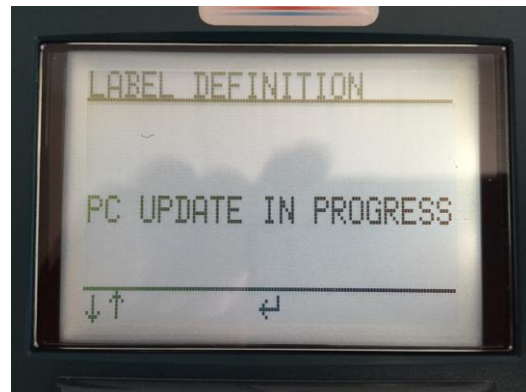
The DATAIR-400/M3 must have version 1.0 installed or a later.

Using the supplied RS232 Firmware Update cable, connect the PC to the DATAIR-400/M3. This is a dual function cable in that it will function as a firmware update cable when the “DAT400” end of the cable is connected to the DATAIR-400/M3 – **DO NOT CONNECT IT THIS WAY WHEN RUNNING THIS SOFTWARE!**

PLEASE ENSURE that for running this software you connect the **D9 socket marked “DAT400” to the PC serial port.**

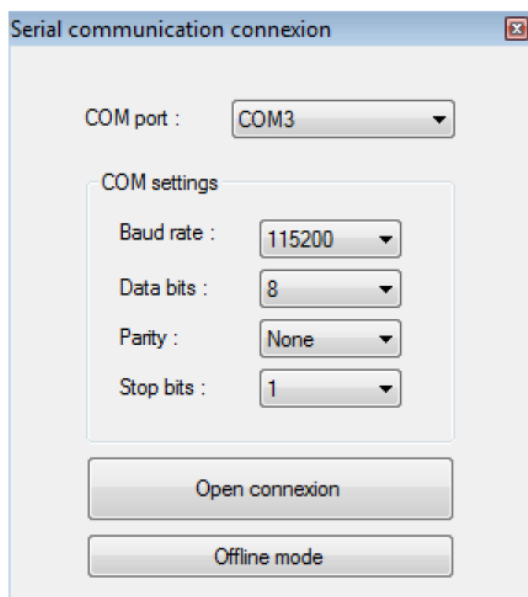
PLACE DATAIR-400/M3 into PC UPDATE MODE

In order to allow serial communication between the DATAIR-400/M3 and the PC the DATAIR-400/M3 must be placed into “PC UPDATE MODE”. See LCD screen shots below.



Whilst the DATAIR-400/M3 is in this screen (“PC UPDATE IN PROGRESS”) custom labels can be downloaded/uploaded to and from the PC.

When you run the software, it is displayed as full screen for a better view, and the connection window is as shown.

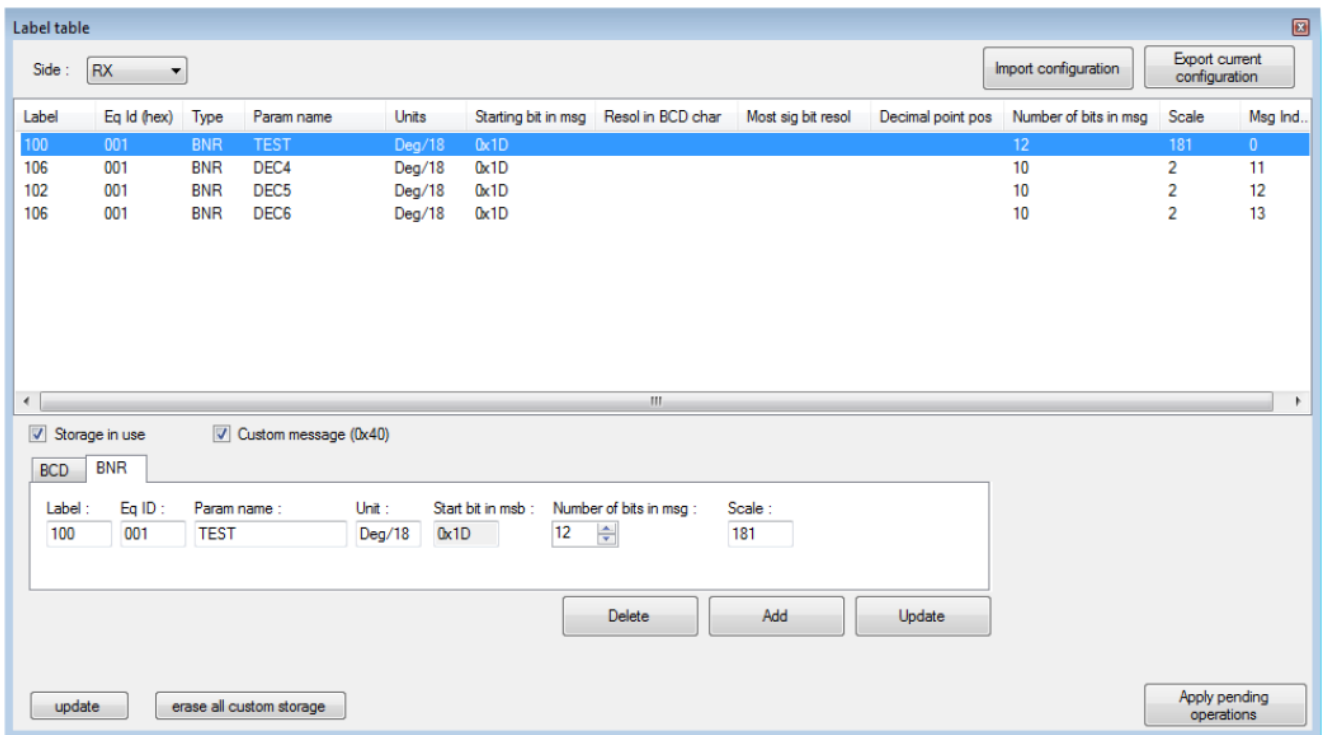


By clicking on the *Open Connection* button, you will open the connection to the DATAIR-400/M3, and the software will wait for a serial information message from the DATAIR-400/M3 containing version info and available internal label storage.

The software begins to download all custom storage.

By clicking on Offline mode, you can use the software without DATAIR-400/M3 connection for working on local configurations.

2.1 LABEL TABLE



The Label Table window shows you the custom label on the DATAIR (if not Offline), and allows you to edit custom labels.

You can import/export configuration to XML file on your PC by using “Import configuration” and “Export current configuration” buttons.

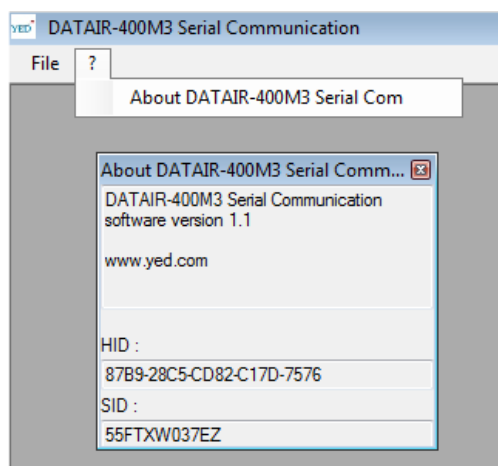
You can Delete/Update selected custom labels by using the “Delete” and “Update” buttons, or adding a custom label by clicking on the “Add” button.

Modifications will not affect the DATAIR-400/M3 stored labels until you apply modifications by clicking on “Apply pending operations” button.

You can erase all custom labels on the DATAIR by using “erase all custom storage” button. By clicking on the “update” button, all custom storage will be downloaded from the DATAIR for updating the table.

2.2 REQUESTING FULL LICENSED SOFTWARE VERSION

For requesting the full software version, use the ? – *About DATAIR-400M3 Serial com* menu, and then send us the SID and Hardware ID shown on the about window. We will return you a license key that must be placed in DATAIR-400M3_SC.lic file in the same directory as the executable file. The license key is attached to the hardware, so it activates the software on only one computer, the one corresponding to the SID/Hardware ID couple.



<<<< END >>>>